

# ARCHITECTURAL PERMEABLE PAVERS

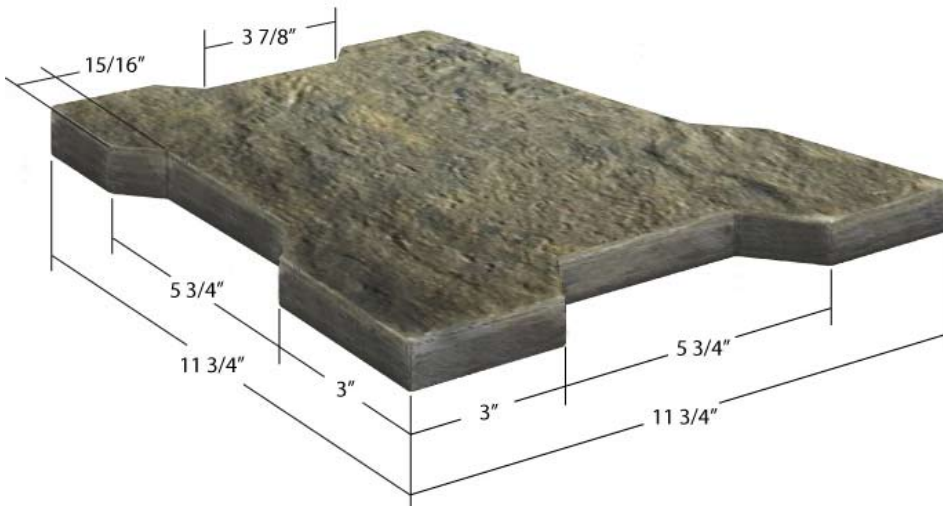
BY WAUSAU TILE

New  
Exclusive



Terra-Pavers Physical Properties

Property	Value	Test Method	Property	Value	Test Method
Compressive Strength	=>8,000 psi avg.	ASTM C140	Freeze-Thaw	=< 0.5% loss of dry weight (50 cycles)	ASTM C67
Flexural Strength	=>700 psi	ASTM C293	Center Load	1,850 lbs.	WTCL 99
Water Absorption	<6%	ASTM C140			



Available Thickness: 2" to 2 3/4"

## Necessity for stormwater management

In urban development the necessity for stormwater management has become a reality. Impervious surfaces, such as streets, sidewalks and parking lots have caused excessive runoff of stormwater, carrying with it contaminants that deposit into the drains and even directly into natural waterways.

Under the Clean Water Act, the need to comply with regulations governing water quality has caused loss of valuable land due to the need for large retention ponds.

# ARCHITECTURAL PERMEABLE PAVERS

---

BY WAUSAU TILE

## How does the permeable paving system work?

Permeable pavers are our concrete pavers separated by cutout patterns at the joints. The open area at the joints is then filled with small stones. The water enters the joints between the solid concrete paver and flows through a base material of crushed stone. The spaces among the crushed stone store water and filter it back into the soil subgrade.

## Features and benefits

- Widest variety of colors and finishes in the industry
- Meets or exceeds ASTM requirements for compressive and flexural strength, freeze/thaw and water absorption
- Qualify for LEED credit through the USGBC guidelines
- Reduces stormwater runoff and improves water quality
- Increases building sites and design options
- Reduces urban heat islands - minimizes impacts on microclimates
- Total surface is 86.9% impervious.
- Spacing lugs for machine installation

Permeable pavers are an exclusive design by Wausau Tile, Inc. and are available in **150 standard** colors and finishes.



Type 1  
Exposed  
9 Colors



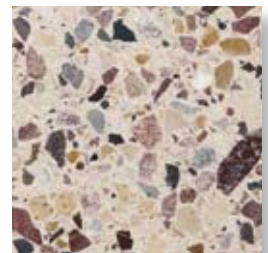
Type 2  
Exposed Granite  
36 Colors



Type 3  
Shot Blasted  
18 Colors



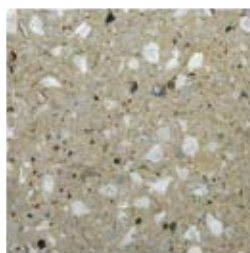
Type 4  
Stoney Creek  
10 Colors



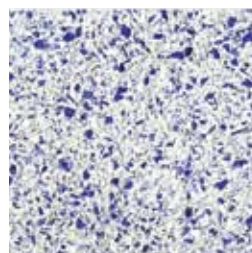
Type 5  
Ground  
18 Colors



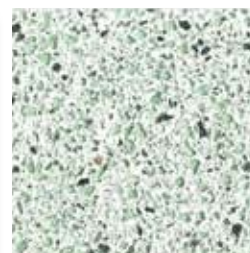
Type 6  
Cool Pavers  
13 Colors



Type 7  
Ocean View  
10 Colors



Type 8  
Glass Washed  
18 Colors



Type 9  
Glass Blasted  
18 Colors

We manufacture 12" x 12"  
permeable pavers in 150 Standard  
Colors and Finishes



PO Box 1520 Wausau, WI 54402-1520  
(800) 388-8728 • (715) 359-3121  
Fax: (715) 359-7456  
www.wausautile.com  
E-mail: wtile@wausautile.com  
www.wausaupaving.com